

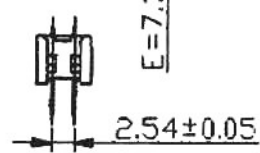
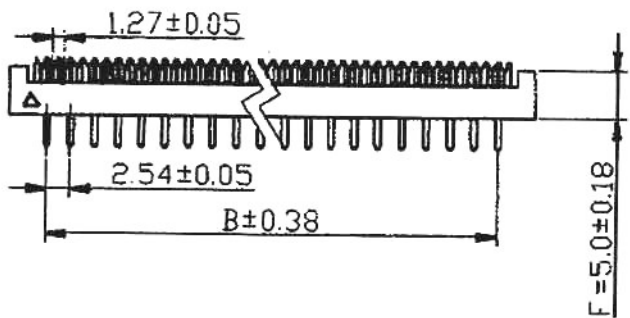
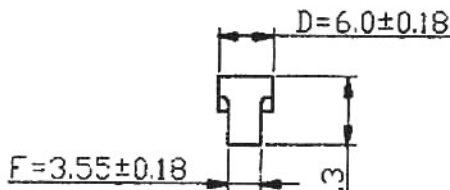
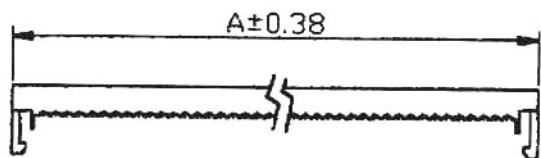
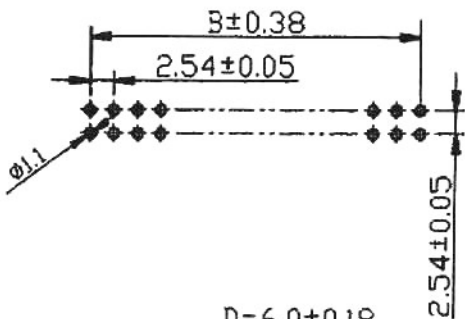
MATERIAL:

Insulator : PBT+30% Glass Fiber(UL94V-0)
 Contact : Phosphor Bronze or Brass
 Contact Plated : Gold or Tin over Nickel.

ELECTRICAL CHARACTERISTICS:

Current Rating: 1 Amp.
 Withstanding Voltage: AC 500V r.m.s.
 Insulation Resistance: 1000 megohms Minimum at DC 500V.
 Contact Resistance: 15 Milliohms Maximum.
 Operating Temperature: -40 °C~105 °C.

P.C. Board Layout



No. of Contacts	A	B
8	15.71	7.62
10	18.25	10.16
12	20.75	12.70
14	23.30	15.24
16	25.85	17.78
18	28.40	20.32
20	30.95	22.86
24	36.05	27.94
26	38.60	30.48
30	43.70	35.56
34	48.80	40.64
36	51.35	43.18
40	56.45	48.26
50	69.20	60.96
60	81.95	73.66
64	87.05	78.74

玄茂科技股份有限公司
HSUAN MAO TECHNOLOGY CO., LTD.

UNIT		SCALE	PART NAME	
MM		2:1	2.54mm X2.54mm IDC DIP PLUG After Assembly :7.0mm	
APPD.	CKD.	TOLERANCE	PART NO.	REV.
		± 0.5	C3100-XXABXX00	A

制表日:2002/12/04

DRAWING.	APPROVED
<i>Jane</i>	